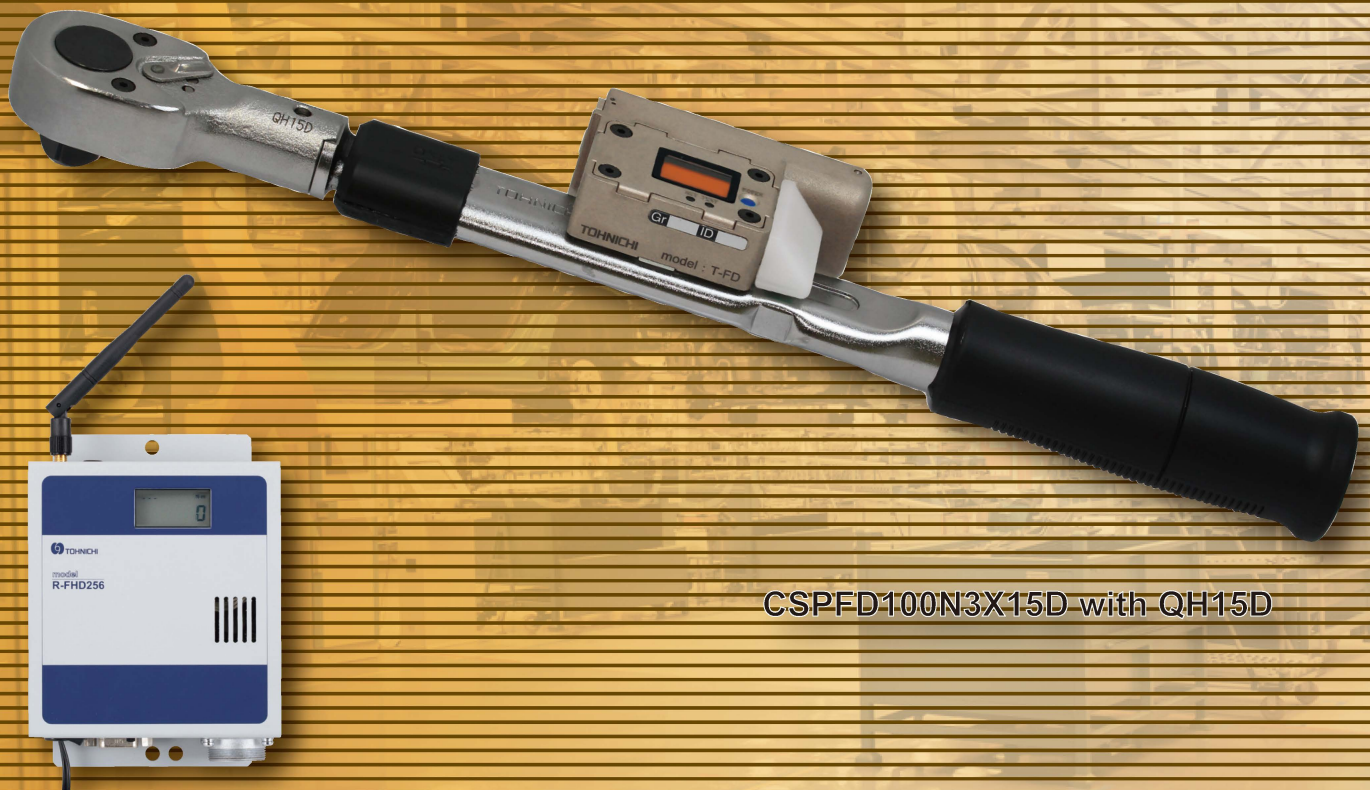


# CSPFD/FDD

**Click Wrench with  
Wireless Torque Value  
Data Transfer**



R-FHD256

CSPFD100N3X15D with QH15D

- Transfer and Track all your hand tightened torque values
- Compact transmitter module with large LED light for judgment
- AAA battery operation
- FDD Model features double tightening detection

# Preset type Data Transfer Wireless Torque Wrench CSPFD/FDD

## Features

- **Transfer actual applied torque data by wireless transmission.**

Robust click type torque wrench is ideal for quick paced assembly.

- **Power-saving design, 24 hours of continuous operation**

Easy battery management using AAA battery.

- **LED Light offers simple visual judgment**

Blue light indicates a good judgment while red alerts the user to a NG judgment.



CSPFD50N3X12D with QH12D



CSPFD25N3X10D with QH10D



- **Parameter setting software**

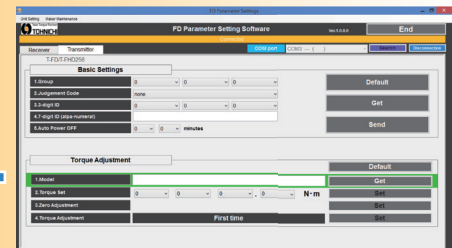
Free setting software is provided in Japanese, English, Chinese version.

\* Setting box, PC, RS232C cable are required separately



SB-FH256 Ver.V01A

RS232C



Parameter Setting Software

- **Double Tightening Detection function Model: CSPFDD**

If the same fastener is tightened twice the second tightening data will be rejected.



Completion of tightening process with Blue signal



LED lamp is lit Red when tightening same bolt which already tightened with required torque.



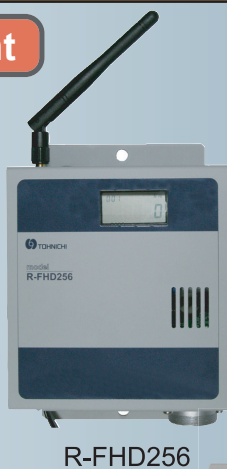
## Configuration example (OK/NG Judgment by external equipment)

### Actual Applied Torque Management

① Tightening data

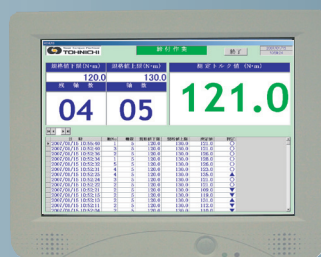


② Data receive



③ RS232C

Gr, 3-digits ID,  
Torque value,  
7-digits ID



PC/PLC

④ OK/NG Judgment

OK, Hi/Lo NG

⑤ Answer back

⑥ CSPFD/FDD Blue LED lights on: Torque OK



⑥ CSPFD: Red LED lights on: Torque NG  
FDD: Double tightening/Torque NG



② CSPFD/FDD Red LED blinks: Communication error



I/O Terminal

Standard accessory:  
NJC-24-10PM plug  
\*Cable is not included.



⑤ OK, Hi/Lo NG Signal

⑦ Reset input

\*As necessary

External equipment

\* OK/NG judgement function on the receiver R-FHD256

## Variety of interchangeable head

Selectable suitable interchangeable head for each application.

## Special type is also available on your request



MQSPFD Marking with data transfer type



## Capable of tool management by torque wrench tester

Accuracy traceability with calibration by using standard torque wrench tester.



### Standard accessory

Protective cover: FD-PCV  
for FD/FDD



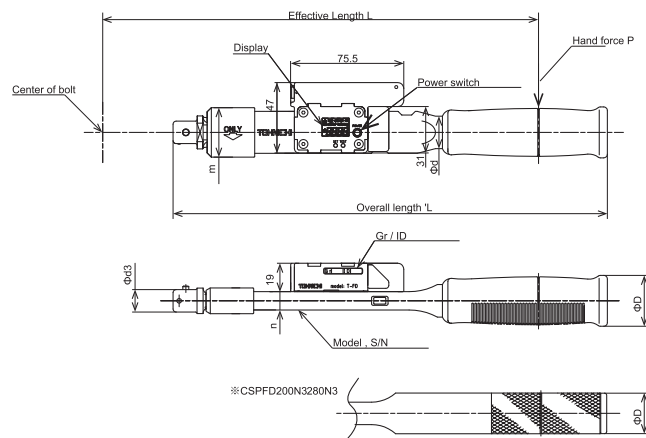
### Optional accessory

Adjusting Tool

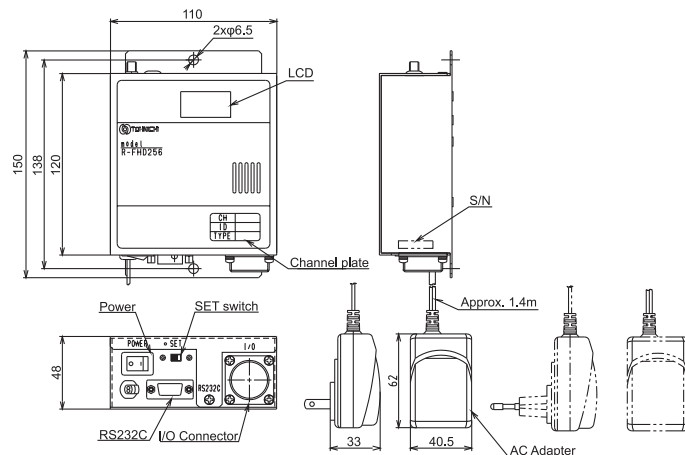


Part No.	Applicable Models
931	CSPFD25N3
930	CSPFD50N3 - 280N3

## ■ CSPFD/FDD



## ■ R-FHD256



# Specifications

Accuracy +/-3%+1digit

Model		N·m		kgf·cm		kgf·m		lbf·in		lbf·ft		L'	Weight
FD	FDD	Min.- Max.	1 digit	Min.-Max.	1 digit	Min.-Max.	1 digit	Min.-Max.	1 digit	Min.-Max.	1 digit	[mm]	[kg]
CSPFD25N3-10NX10D	CSPFDD25N3-10NX10D	2-10	0.1	20-100	1	0.2-1	0.01	20-85	0.5	1.5-7.5	0.1	193	0.32
CSPFD25N3NX10D	CSPFDD25N3NX10D	5-25		50-250		0.5-2.5		50-200	1	3.6-18			
CSPFD50N3NX12D	CSPFDD50N3NX12D	10-50	0.2	100-500	2	1-5	0.02	100-400	2	7.5-36		214	0.46
CSPFD50N3NX15D	CSPFDD50N3NX15D											217	
CSPFD100N3NX15D	CSPFDD100N3NX15D	20-100	0.5	200-1000	5	2-10	0.05	200-850	5	15-75	0.2	290	0.65
CSPFD140N3NX15D	CSPFDD140N3NX15D	30-140	1	-	-	3-14	0.1	-	-	25-100	0.5	349	0.77
CSPFD200N3NX19D	CSPFDD200N3NX19D	40-200		-	-	4-20		-	-	30-150	1	429	1.2
CSPFD280N3NX22D	CSPFDD280N3NX22D	40-280		-	-	4-28		-	-	30-200		627	1.65

**Note** Contact Tohnichi for any other torque range of product.

## Communication Specifications

Model	Transmitter		Receiver	Setting box
	FD	FDD	R-FHD256	SB-FH256
Frequency	2.402GHz-2.479GHz, 1 MHz interval, 78 kinds			
Communication System	Spread spectrum (Frequency Hopping Spread Spectrum)			
Moduration System	GFSK			
Group channel	256 (000-255)			
ID	3-digits (000-999), 7-digits (alphanumeric)			
Input/Output			I/O connetor, RS232C	RS232C
Power Supply	AAA nickel hydride/Alkaline batteries x 2		AC100V-240V	DC9V alkaline battery x 1
Antenna	Chip antenna		Dipole antenna	
Temperature in Use	0 - 45℃			
Communication Distance	10 to 20 m			
LCD Display	Torque 3-digits, torque unit, battery level 4 steps		ID 3-digits, Torque 3-digits, Torque Unit	Group 3-digits, ID 3-digits, Judgmont code 1-digit
LED Display	Blinks in Blue: Judgment OK Blinks in Red: Communication error Turns on in Red: Judgment NG		-	Power status

**Note** Contact Tohnichi for conditions of wireless certification acquisition for each country.



Product movies are available. Visit Tohnichi TV.  
<https://www.youtube.com/c/TohnichiTV>



**TOHNICHI MFG CO., LTD.**  
URL <http://www.global-tohnichi.com>  
E-mail [overseas@tohnichi.co.jp](mailto:overseas@tohnichi.co.jp)  
**N.V. TOHNICHI EUROPE S.A.**  
E-mail [tohnichi-europe@online.be](mailto:tohnichi-europe@online.be)  
**TOHNICHI AMERICA CORP.**  
URL <http://www.tohnichi.com>  
E-mail [inquiry@tohnichi.com](mailto:inquiry@tohnichi.com)  
**TOHNICHI SHANGHAI MFG. CO., LTD.**  
URL <http://www.tohnichi-sh.com>  
E-mail [sales@tohnichi-sh.com](mailto:sales@tohnichi-sh.com)



- The appearance and specifications are subject to change for improvement without prior notice.
- All right reserved. No reproduction or republication without written permission.
- ©TOHNICHI Mfg. CO., LTD. All Rights Reserved.